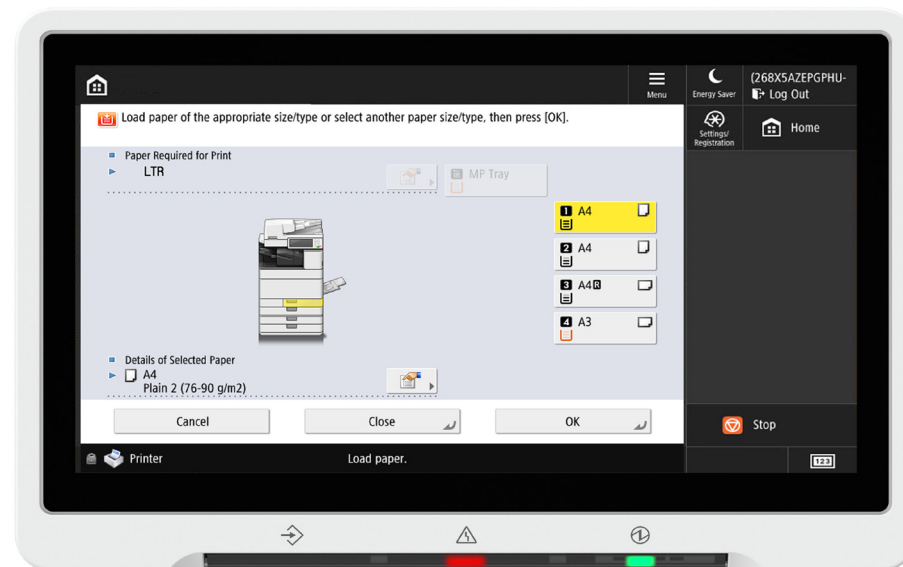


# CLEAR LOAD PAPER ERROR MESSAGE

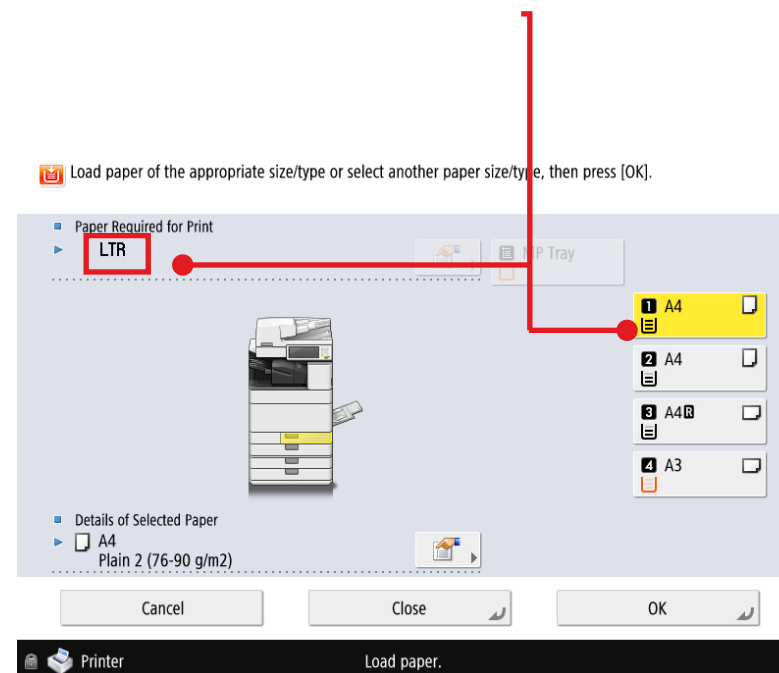
If the device flashes a red light and requests paper (even though there is paper in the device) here is what to do:

- 1 Select the system monitor button located to the bottom left hand side of the device panel touch screen.

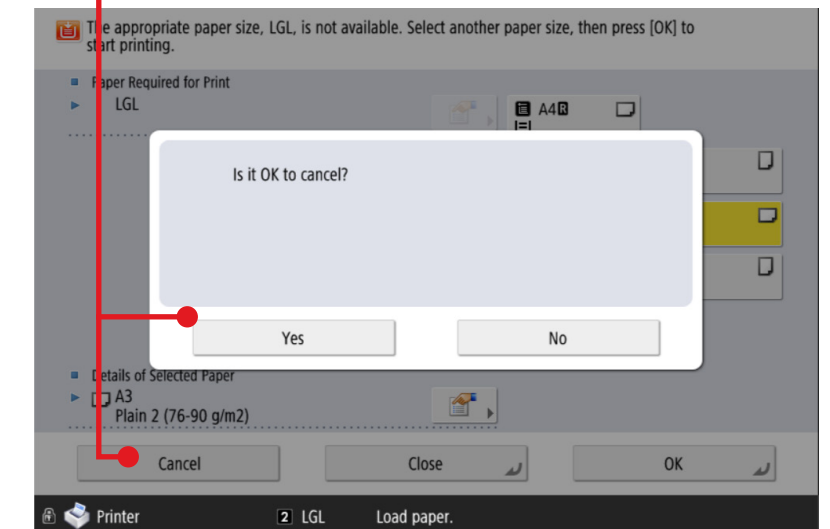


- 2 If a message showing load LTR is displayed, you can override this by selecting one of the trays displayed to the right e.g. A4.

Press OK to continue printing.



- 3 If you do not want to override the paper onto a paper tray as displayed, you can select the cancel button at the bottom of the screen and press 'Yes' on the prompt. This will cancel your print job.



## Note

Please check the page setup of your document within the application you are working. If LTR or Letter is displayed change this to the size you require e.g. A4